

Joint
Development
Control
Committee
18th September 2024



GREATER CAMBRIDGE
SHARED PLANNING

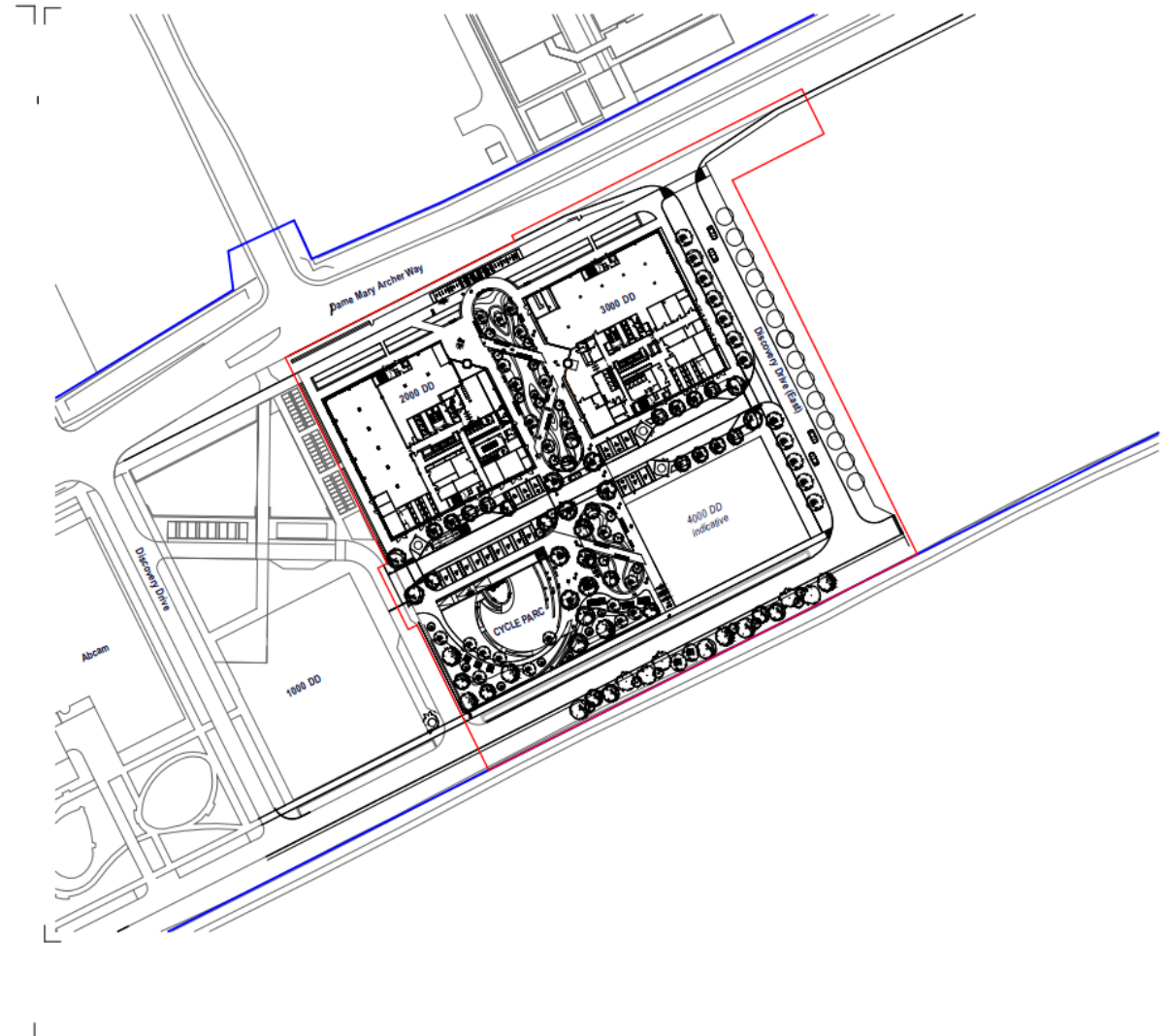
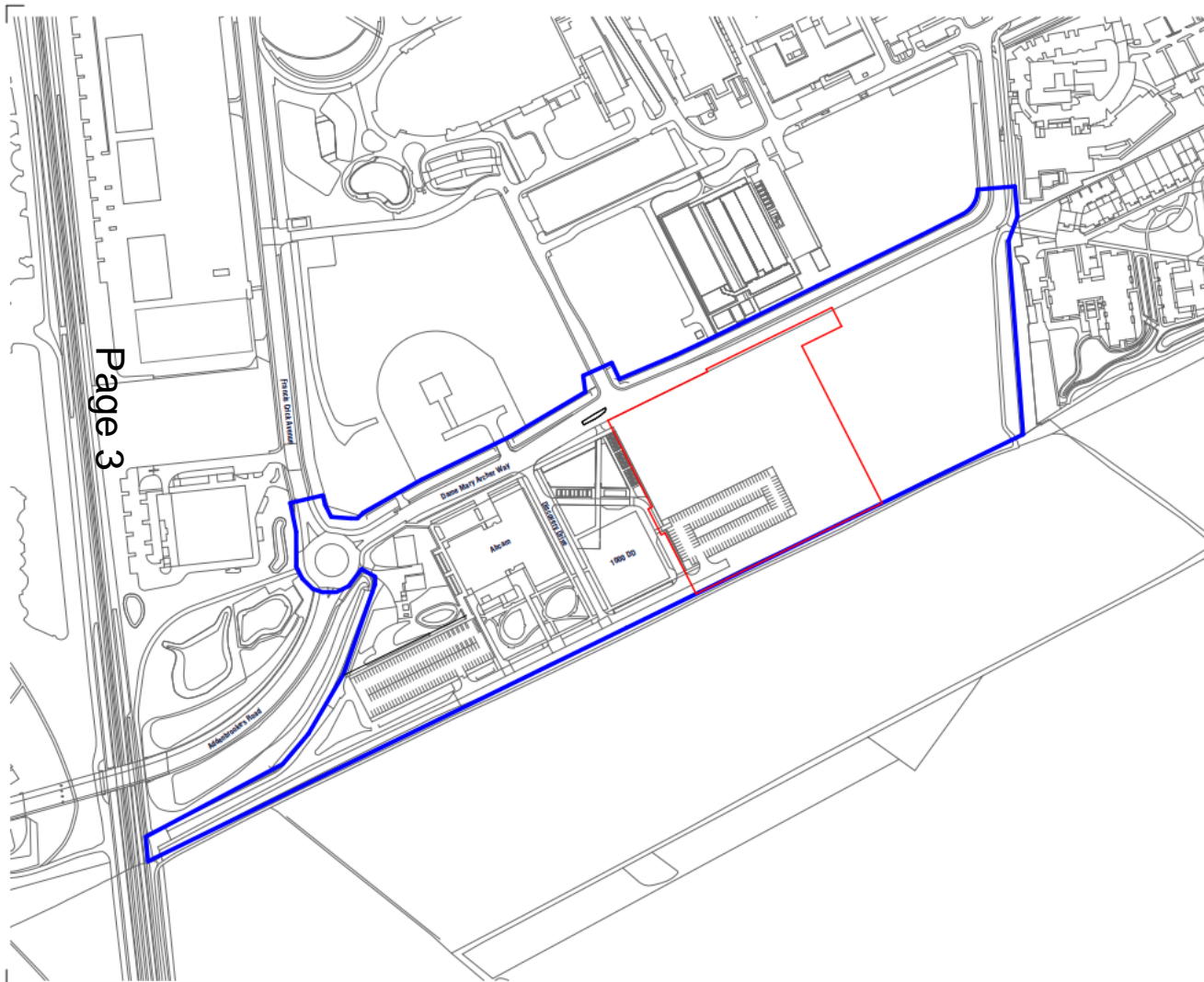
24/01529/REM

Site address: 2000 Discovery Drive and 3000 Discovery Drive, Dame Mary Archer Way, Cambridge Biomedical Campus

Proposal:

Reserved matters application pursuant to 16/0176/OUT for all matters (access, appearance, landscaping, layout and scale) relating to the development of 2no. mixed-use laboratory and office buildings (2000 Discovery Drive and 3000 Discovery Drive) including associated plant, internal access roads, car parking, cycle parking, landscaping, public open space, and other works and the discharge of conditions 8 (transport spurs), 10 (energy demand), 14 (EV Charging), 31 (on plot cycle and pedestrian facilities), 33 (car parking spaces), 36 (disabled car parking spaces), 37 (cycle parking spaces), 39 (ecological conservation management plan), 41 (drainage), 43 (sustainability), 48 (waste), 49 (landscape) of planning permission 16/0176/OUT.

Location plan and Proposed Site Plan

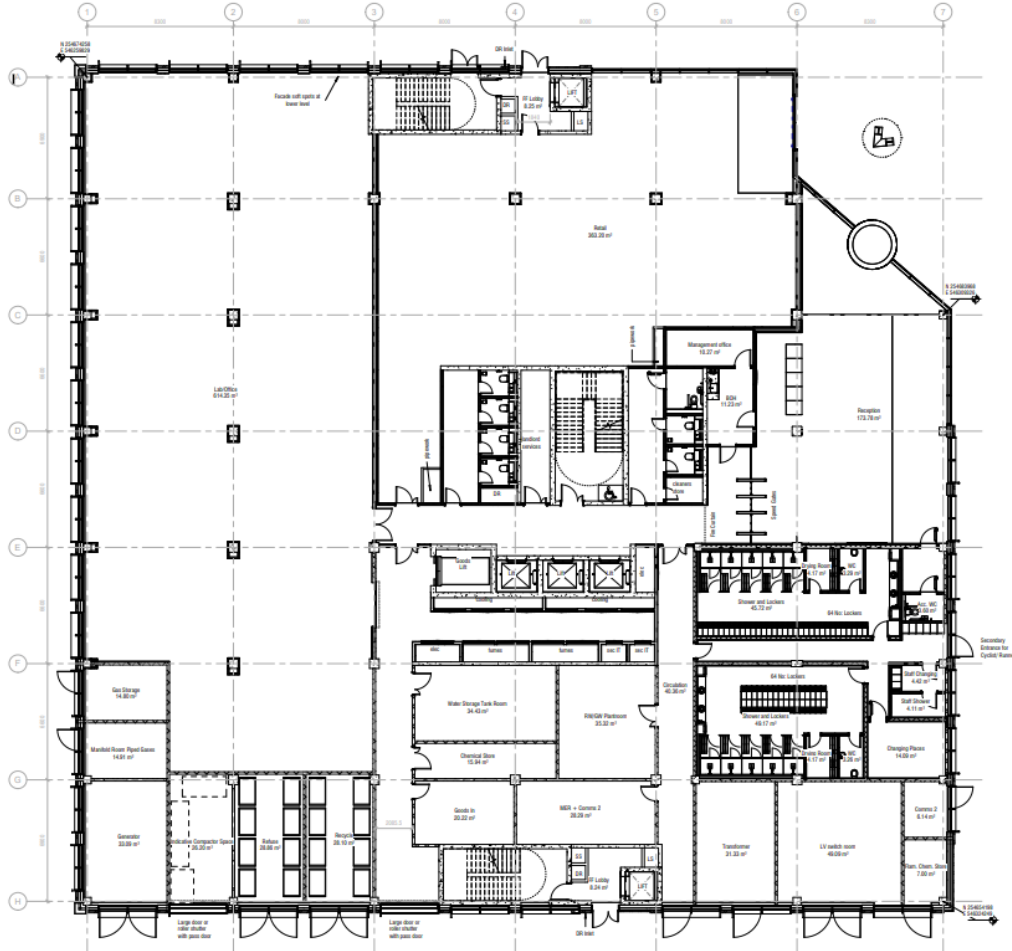


Landscape Layout Plan

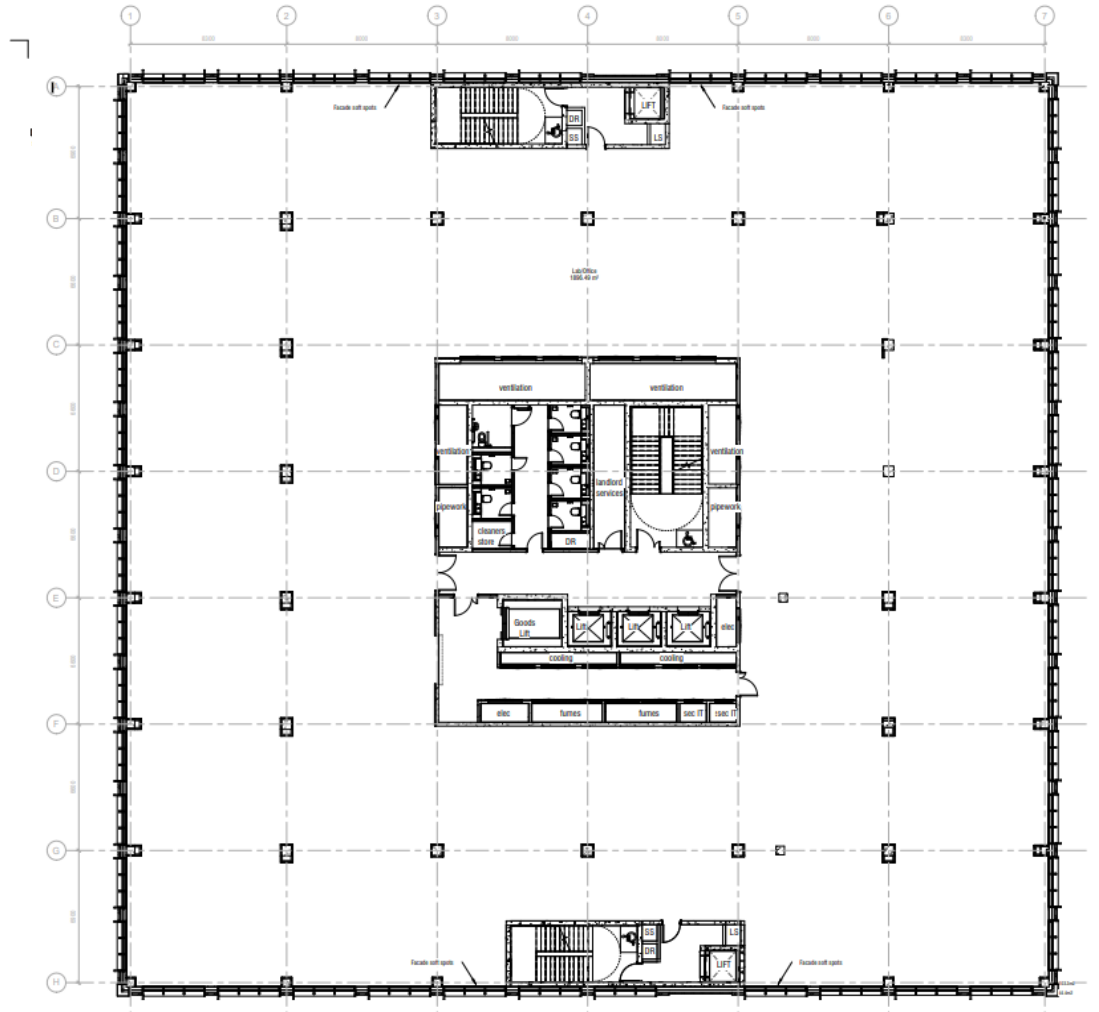


2000 Discovery Drive Floor Plans

Page 5



Ground Floor Plan



Second Floor Plan (typical of first – fifth floors)

2000 Discovery Drive Elevation

Page 7



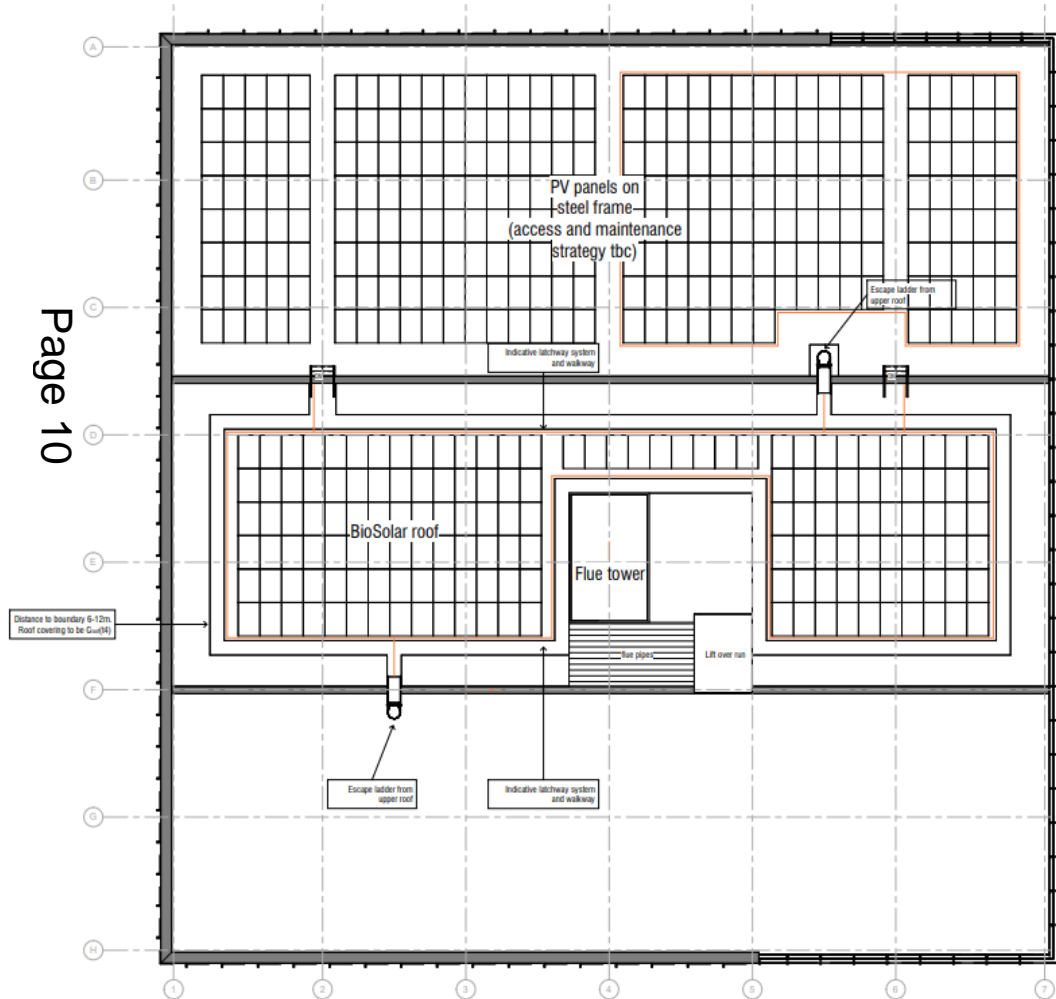
2000 Discovery Drive Visulisation

Page 8



3000 Discovery Drive Roof Plan and Section

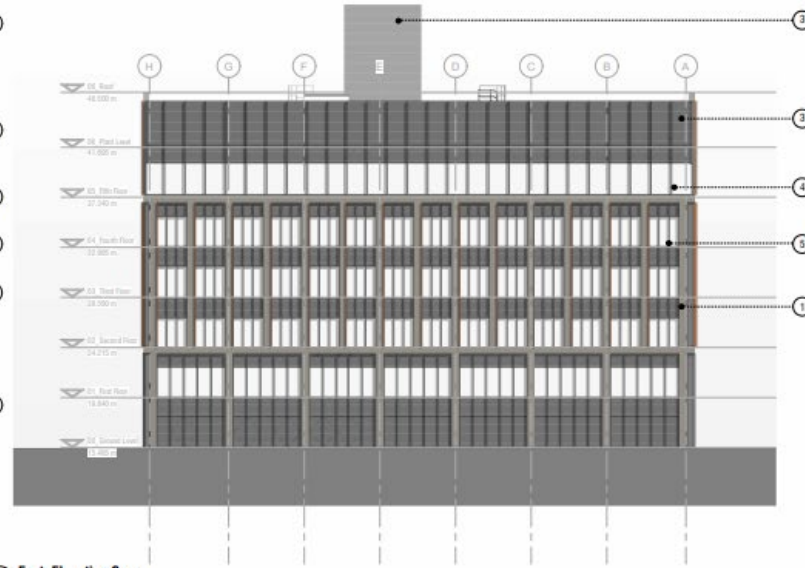
Page 10



3000 Discovery Drive Elevations



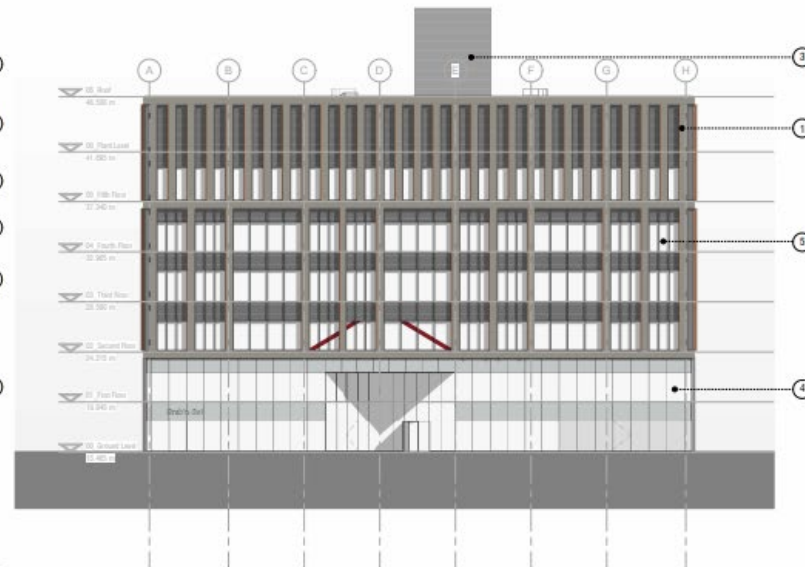
1 North Elevation Copy
1:200



2 East Elevation Copy
1:200



3 South Elevation Copy
1:200

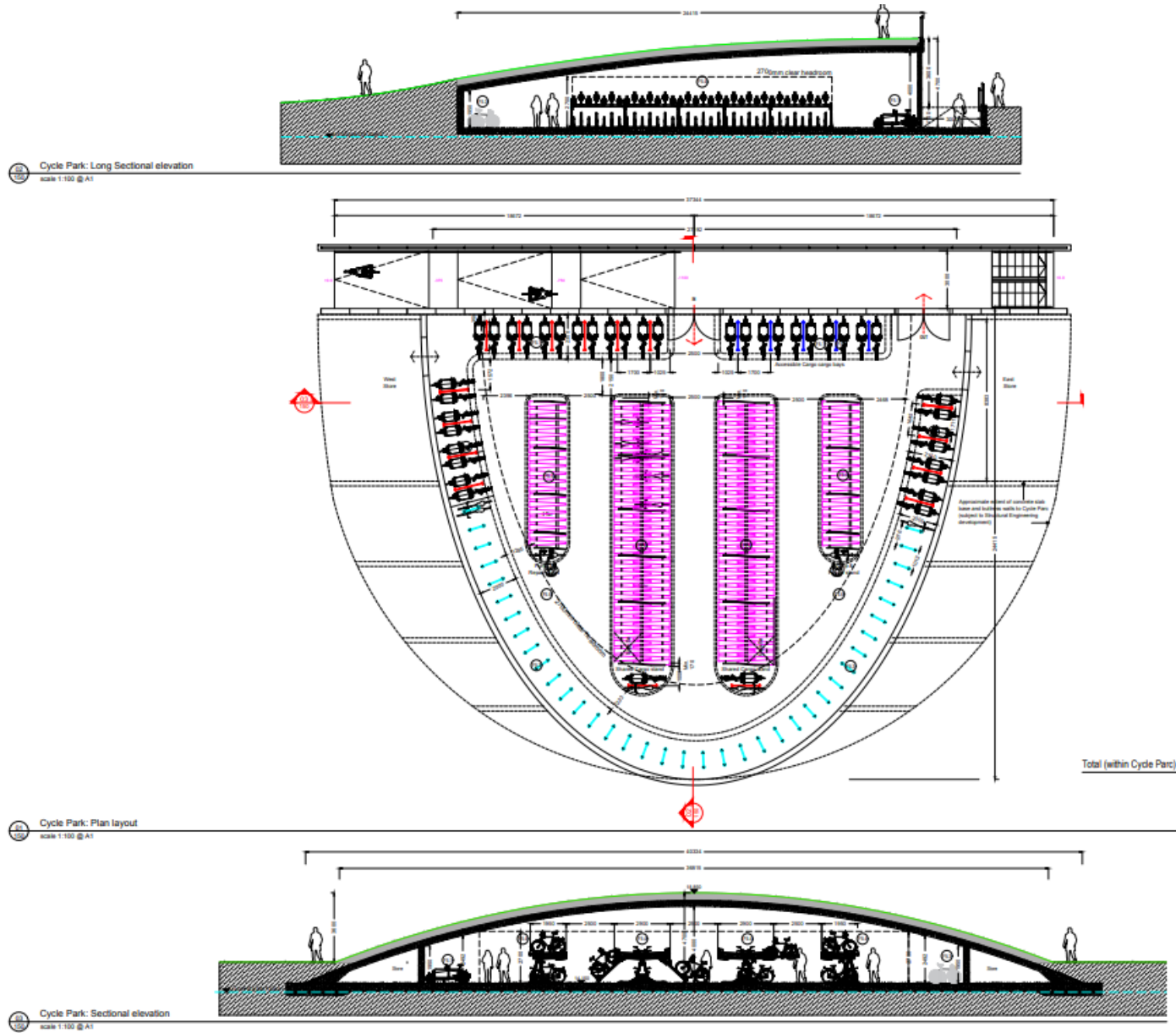


4 West Elevation Copy
1:200

3000 Discovery Drive Visulisation



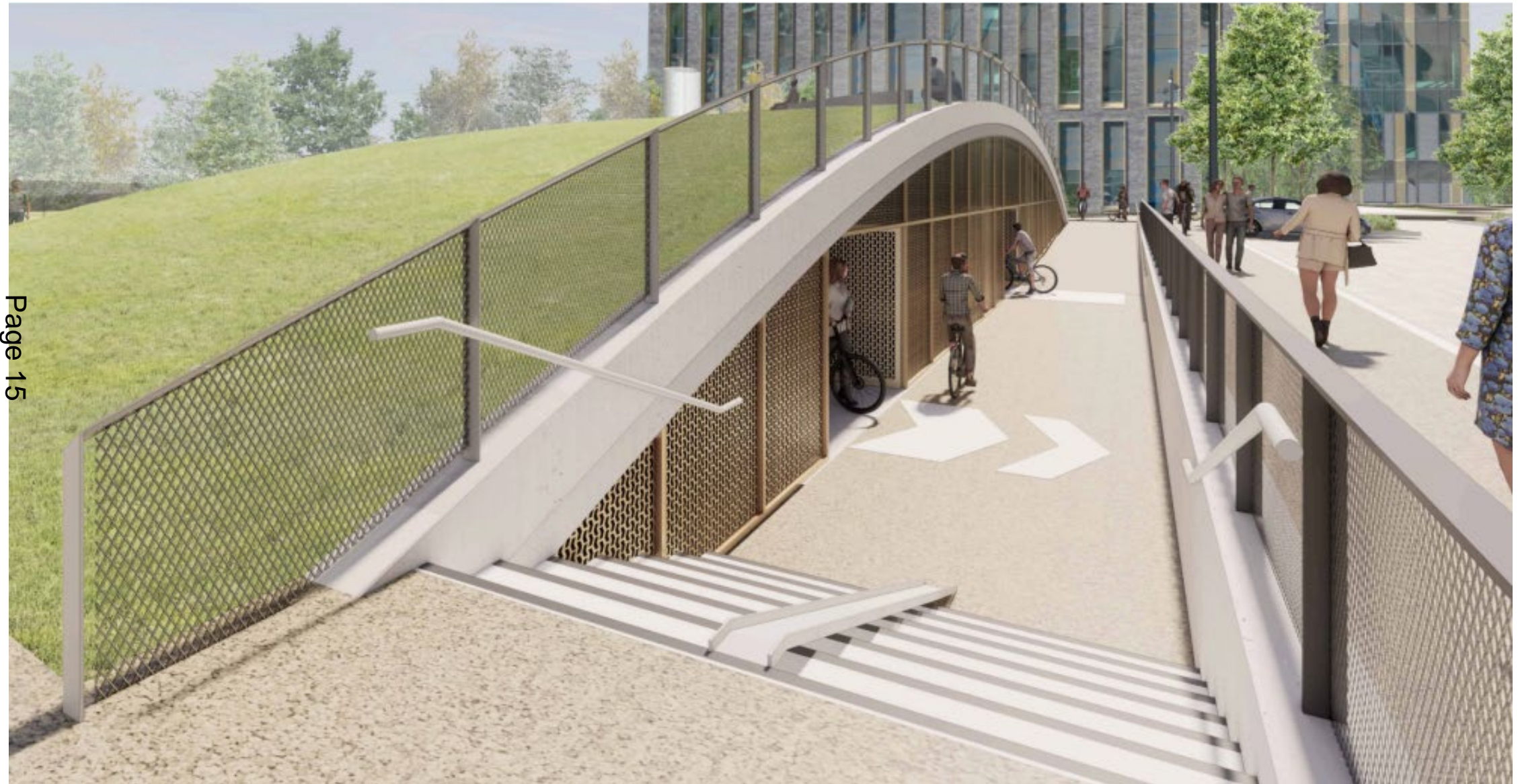
Cycle Parc Section and Floor Layout



Cycle Parc Visulisation



Cycle Parc Visulisation



Cycle Parc and Amenity Space



Cental Rain garden

Page 17



Central Service Road



Joint
Development
Control
Committee
18 September 2024



GREATER CAMBRIDGE
SHARED PLANNING

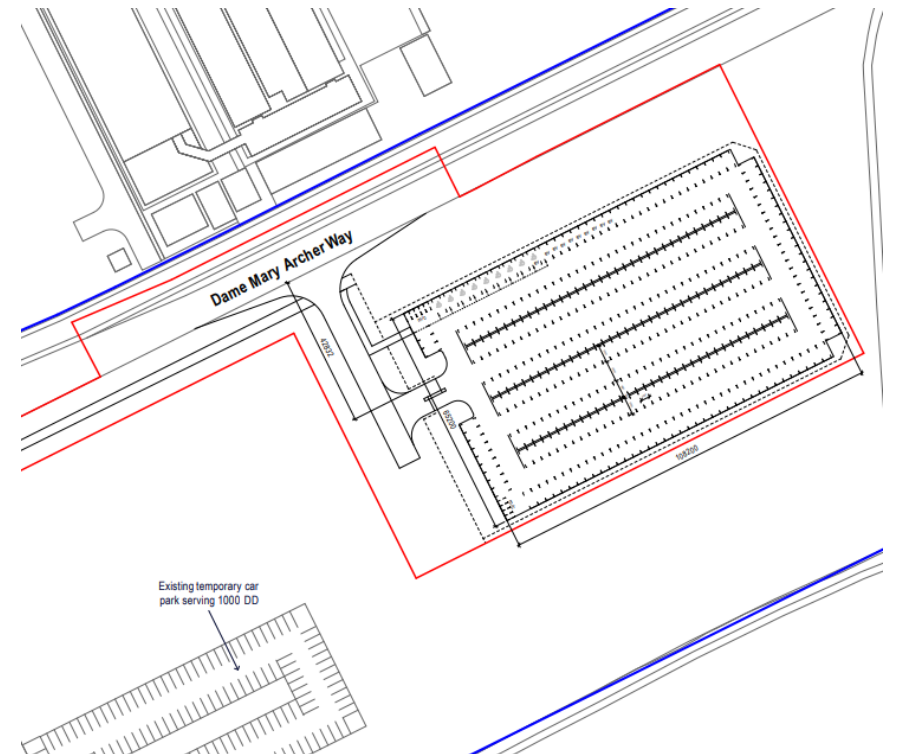
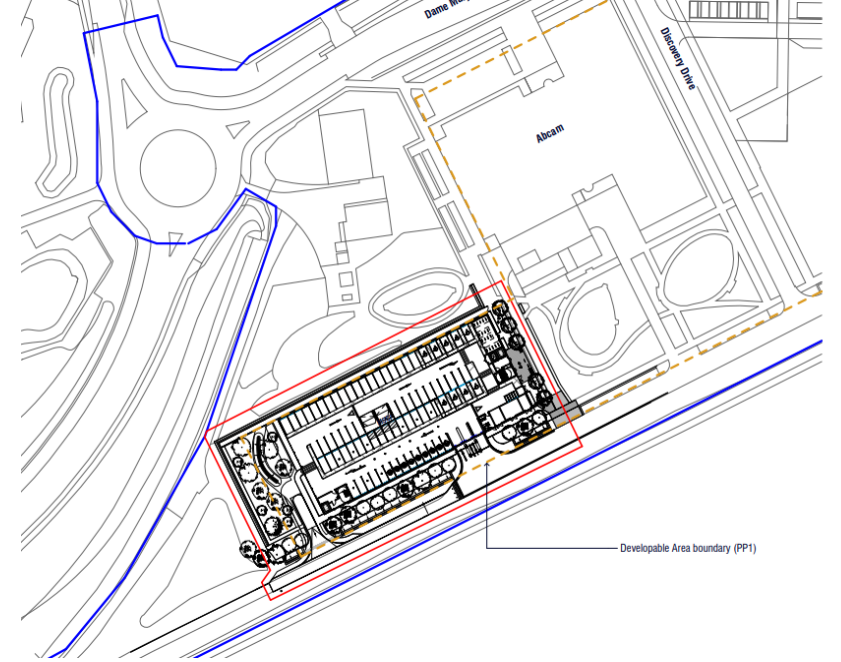
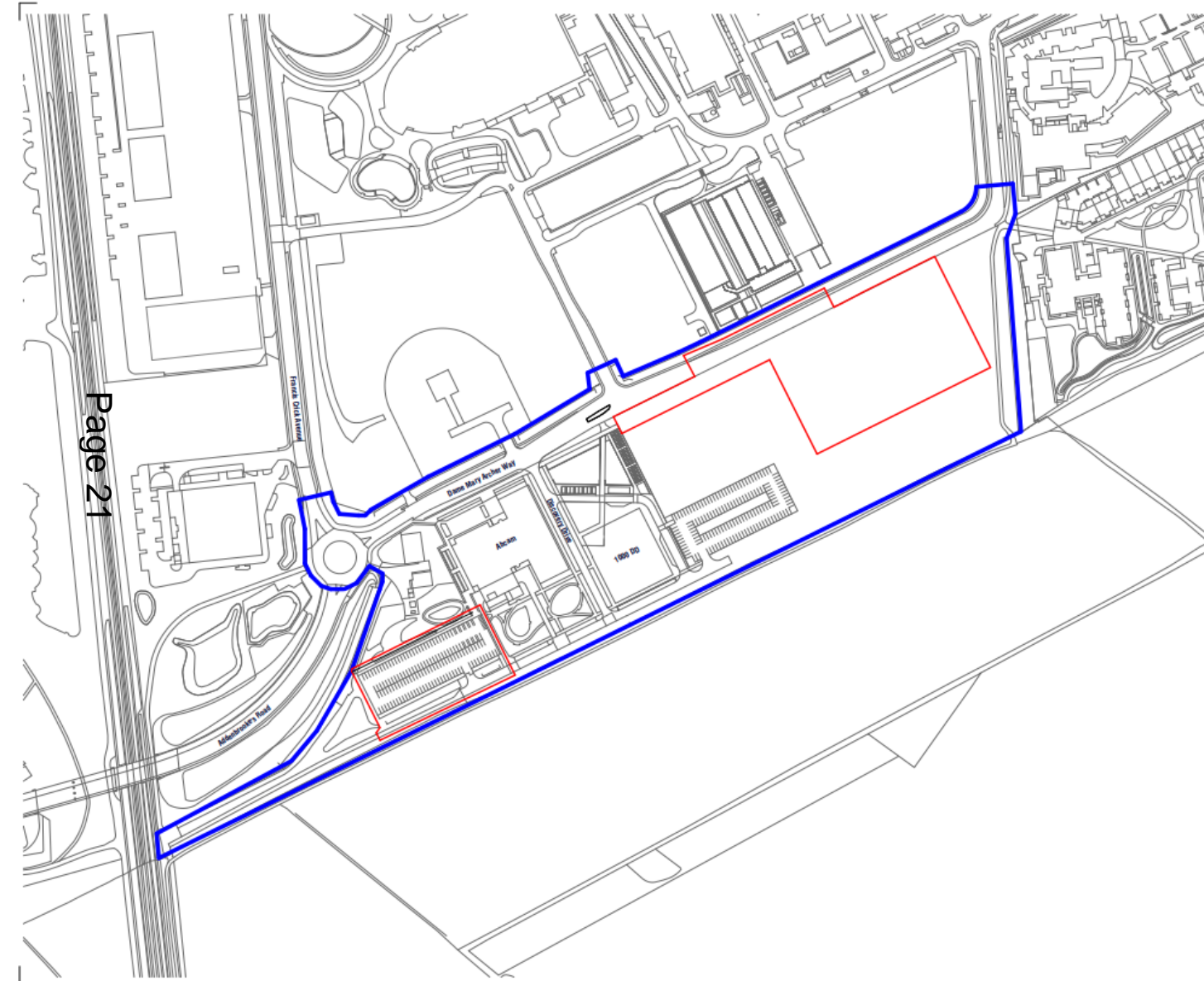
24/01589/REM

Site address: Cambridge Biomedical Campus,
Dame Mary Archer Way, Cambridge, Cambridgeshire, CB2 0AJ

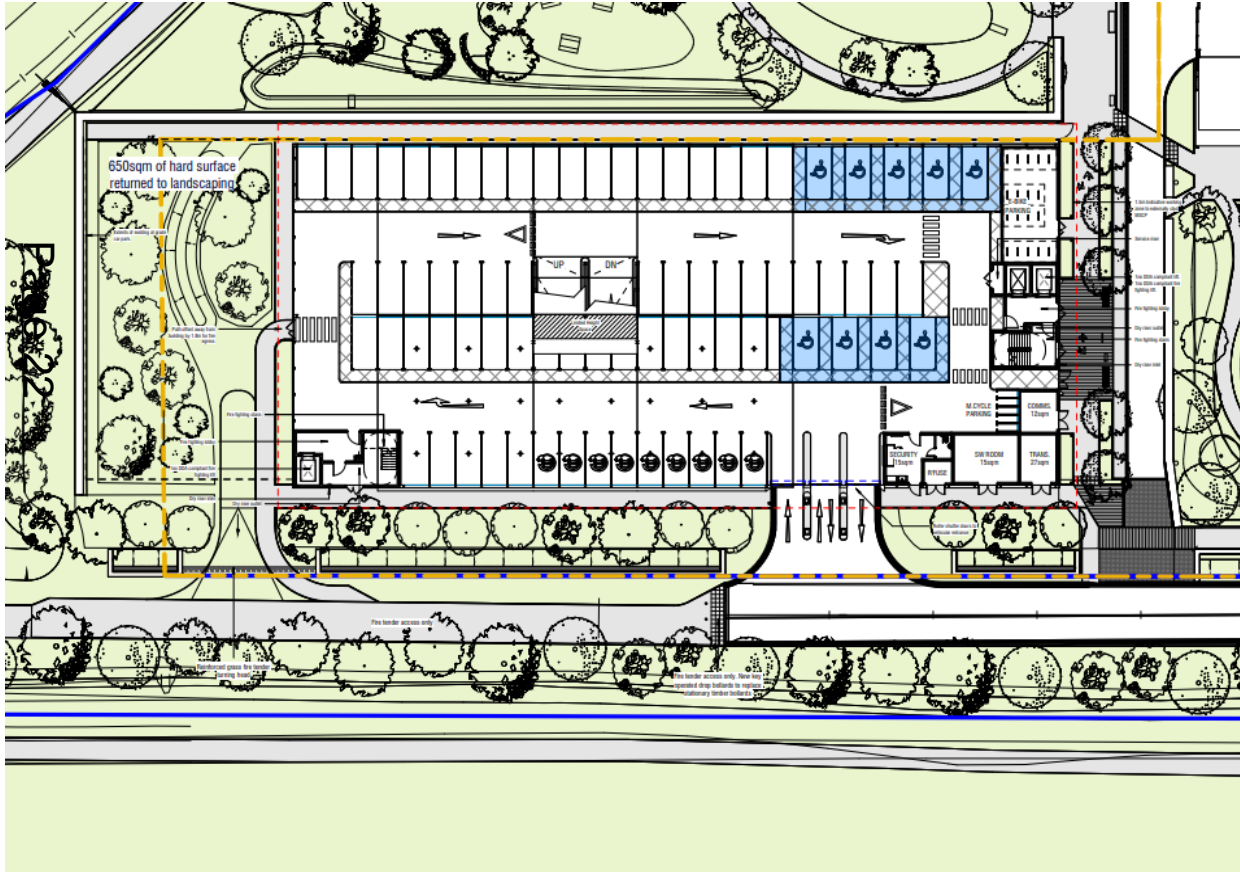
Page 20

Proposal: Reserved matters application pursuant to 16/0176/OUT for all matters (access, appearance, landscaping, layout and scale) relating to the development of a multi-storey car park and a temporary surface car park as part of the phased development and the discharge of conditions 8 (transport spurs), 10 (energy demand), 14 (EV Charging), 31 (on plot cycle and pedestrian facilities), 33 (car parking spaces), 36 (disabled car parking spaces), 37 (cycle parking spaces), 39 (ecological conservation management plan), 41 (drainage), 43 (sustainability), 48 (waste), 49 (landscape) of planning permission 16/0176/OUT.

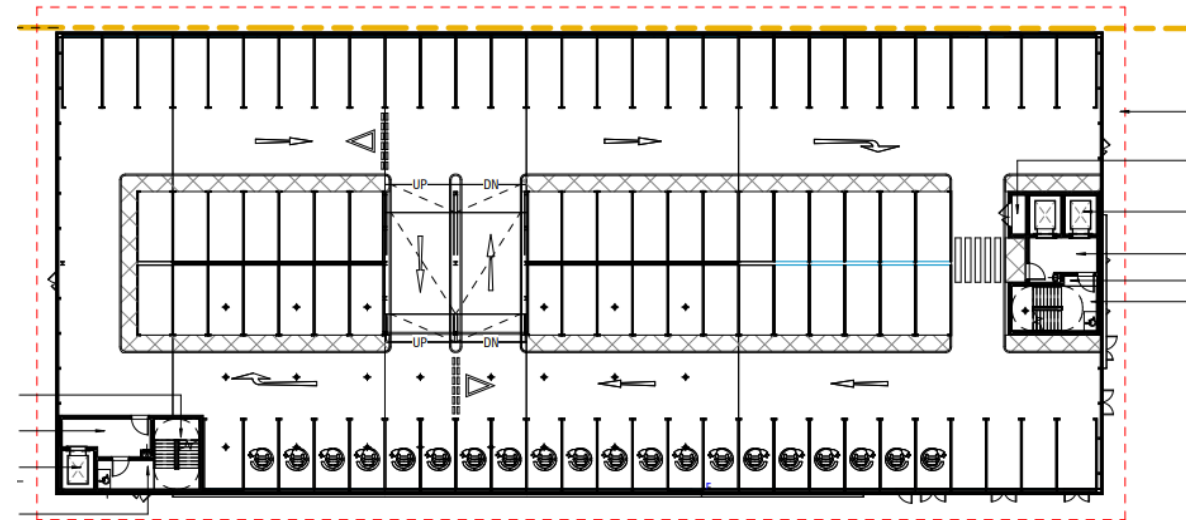
Location and Site Plans



MSCP Floor Plans

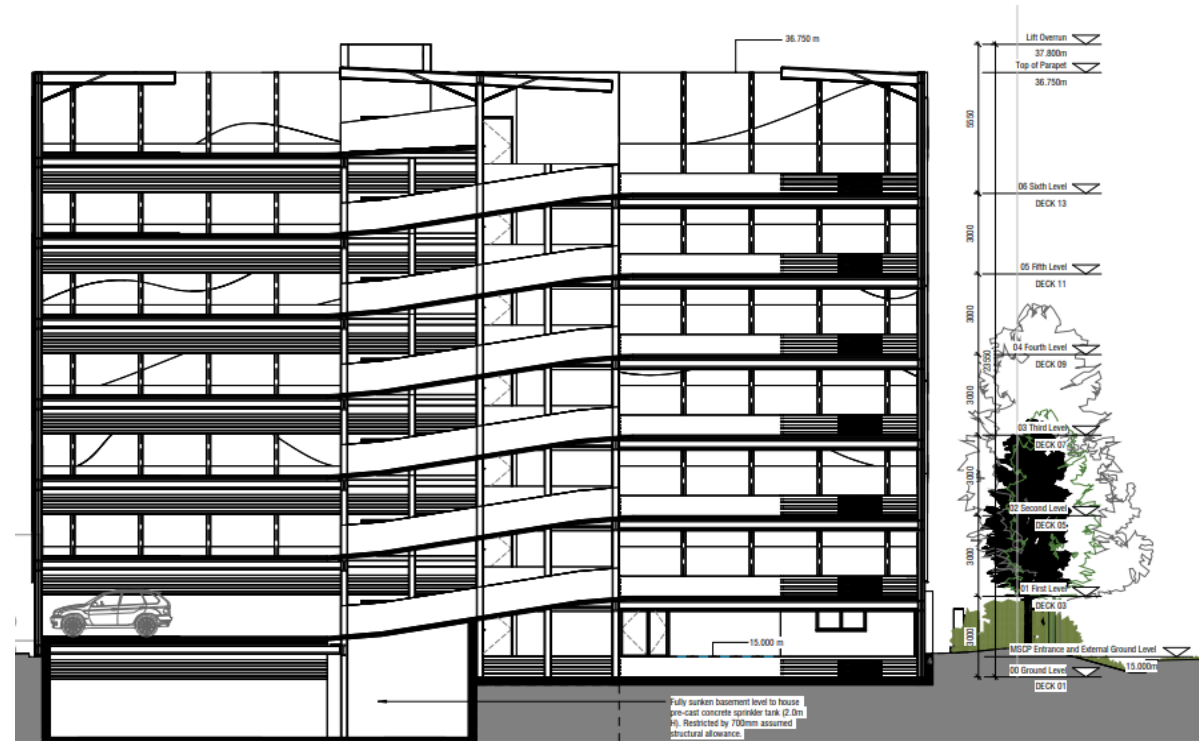
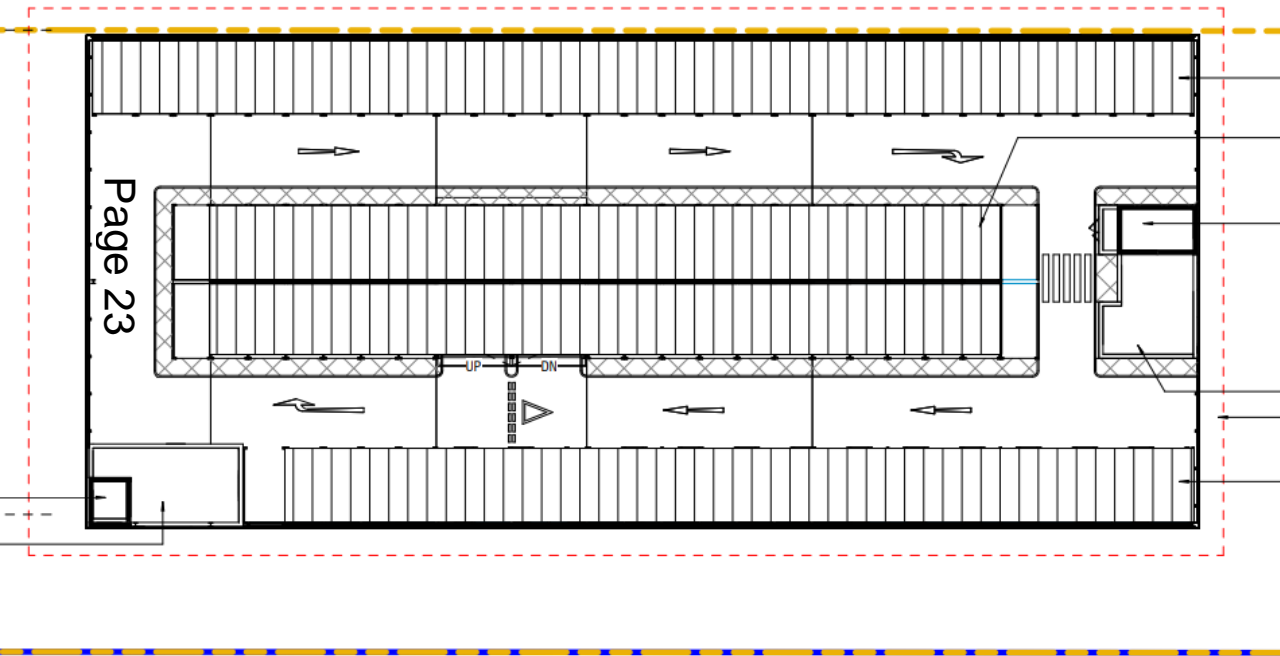


Ground Floor Plan



First Floor Plan (typical of first to sixth floors)

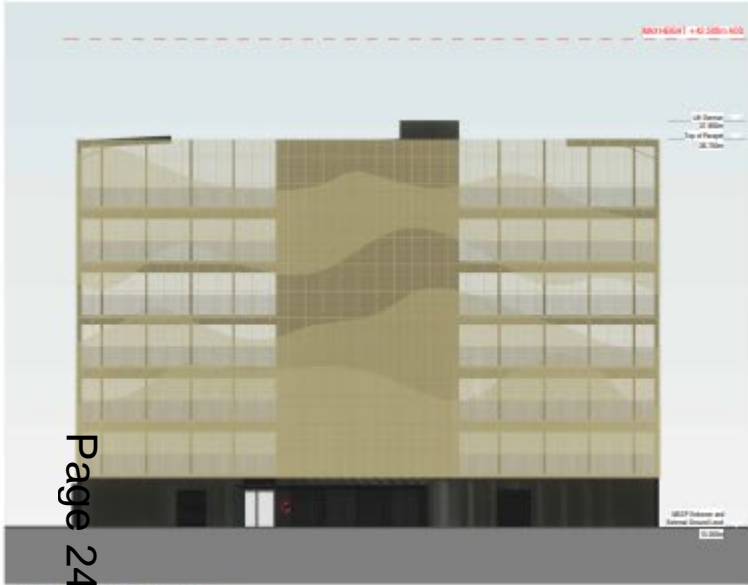
MSCP Roof Plan and Section



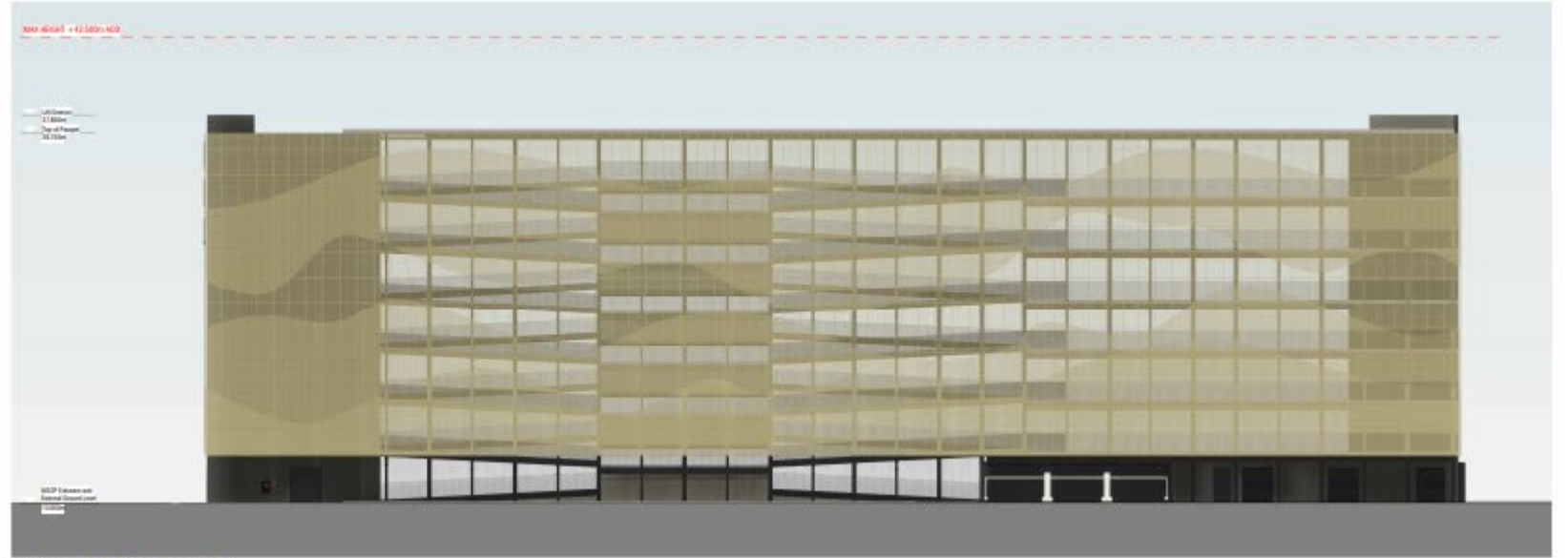
Roof Plan

MSCP Elevations

Page 24



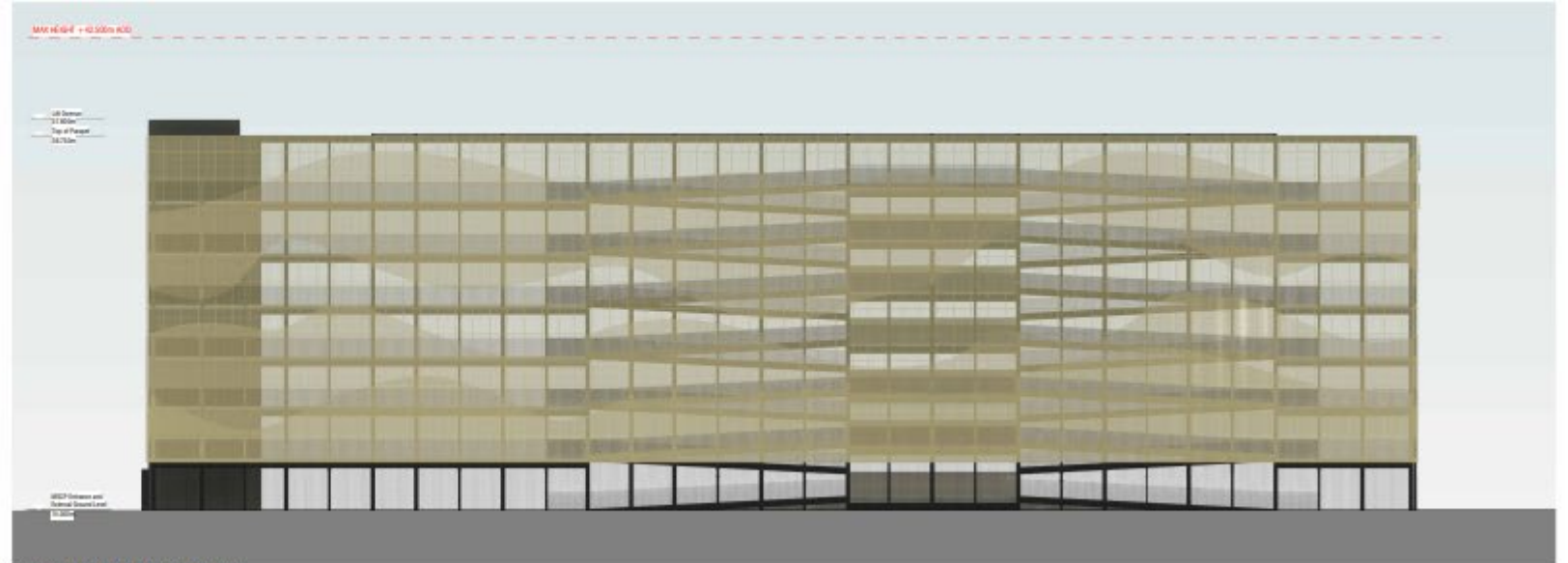
1 PROPOSED EASTERN ELEVATION
1:200



2 PROPOSED SOUTHERN ELEVATION
1:200



3 PROPOSED WESTERN ELEVATION
1:200



4 PROPOSED NORTHERN ELEVATION
1:200

MSCP Visulisation

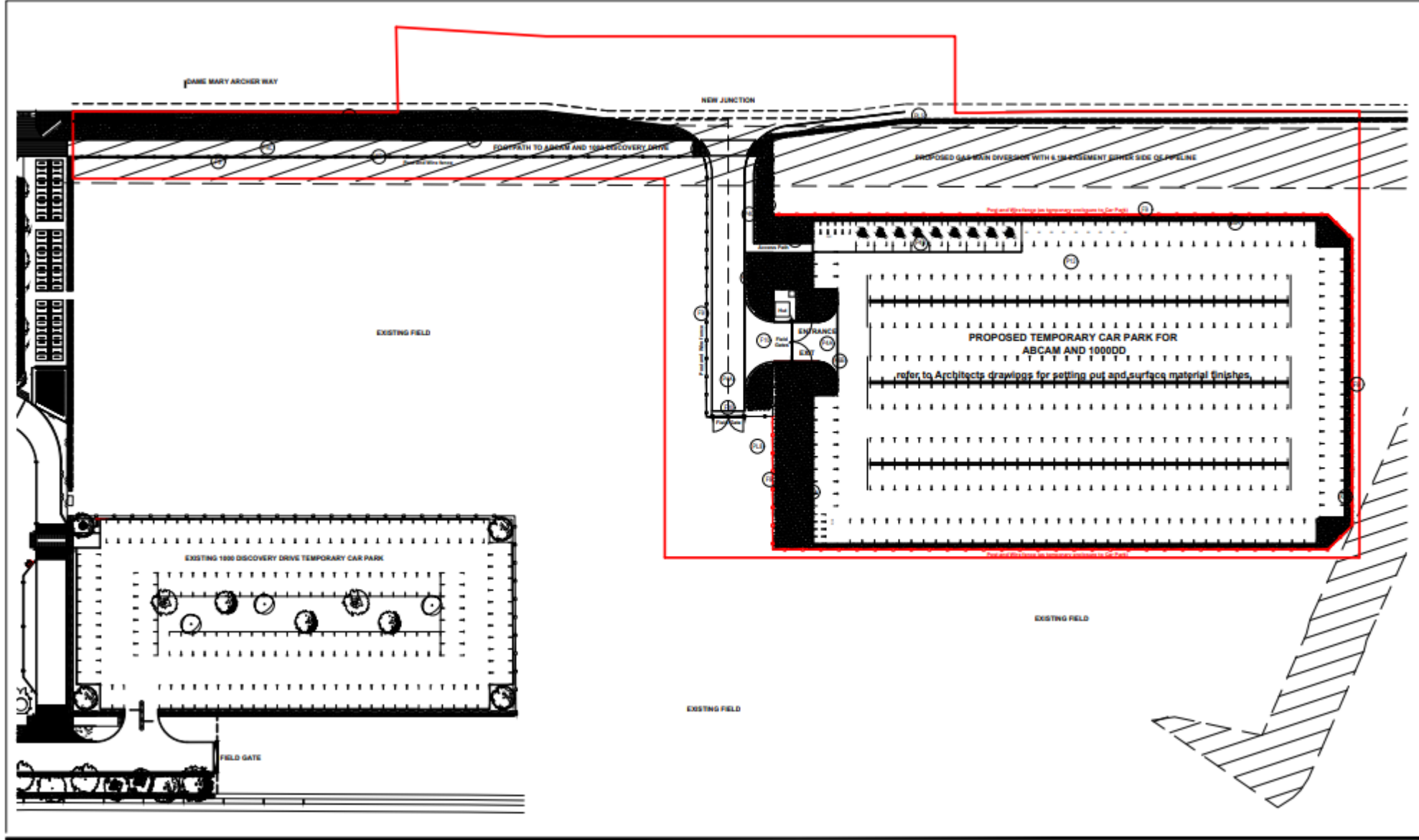


MSCP Visulisation

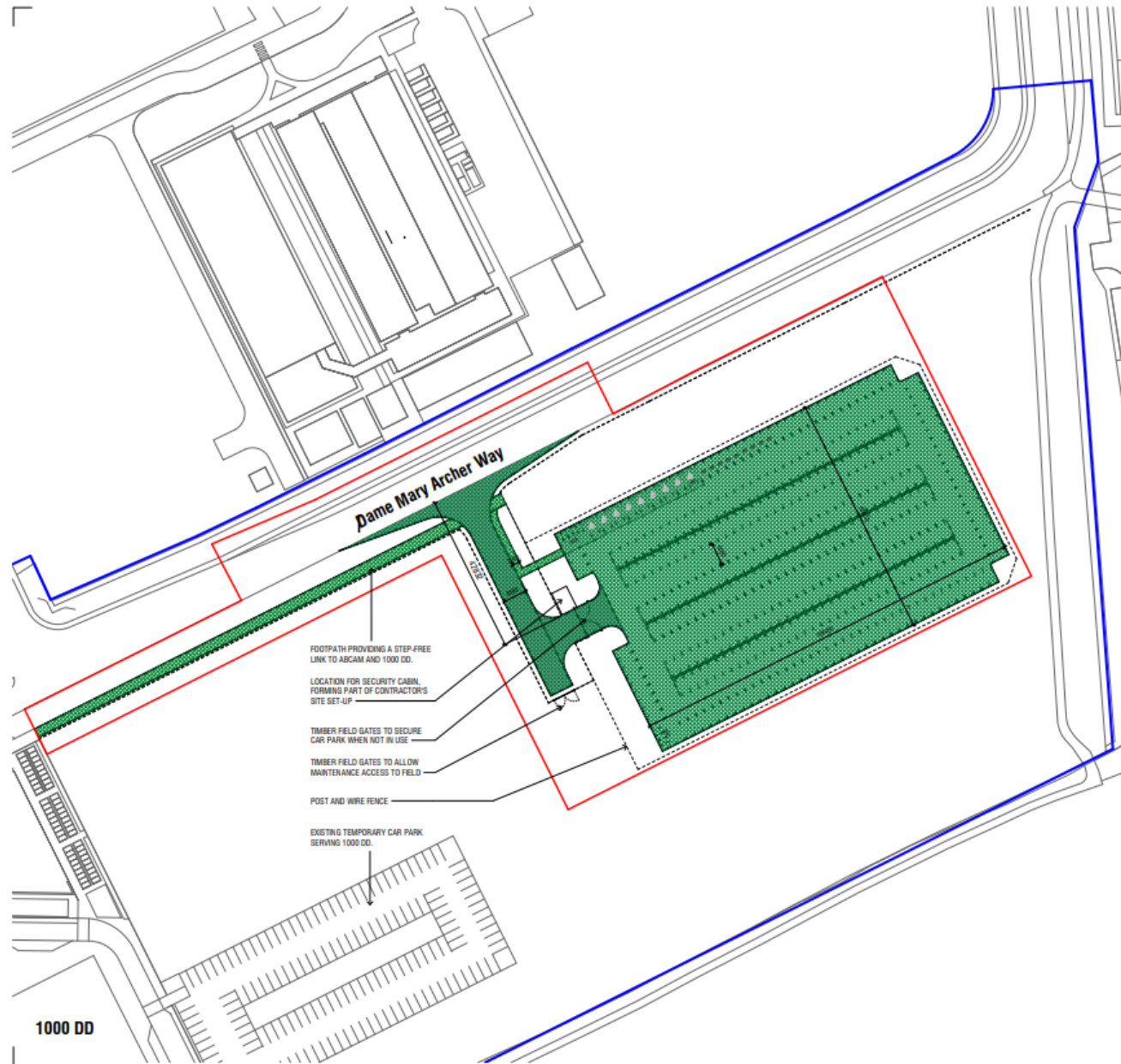
Page 26



Temporary Car Park Landscape Masterplan



Temporary Car Park Site Layout



Proposed temporary car park to serve Abcam and 1000 DD during construction of 2000 DD.

General notes

- 2 nos. timber field gates to secure car park when not in use.
- 2 nos timber field gates to allow maintenance access to field.
- Footpath provided along northern promenade to provide a step-free link to 1000 DD and Abcam.
- Provision of 10 EV spaces including 1 blue badge EV space. 5 dual chargers will be provided with each serving two spaces.
- Provision of 9 motorcycle spaces.
- Please refer to landscape information for detail on perimeter fencing and hard and soft landscaping.

Parking space setting-out

- Standard car space = 5000 x 2500 mm
- Blue Badge space = 5000 x 2500 mm plus 1200mm wide access zone
- Standard m/c space = 2550 x 1500 mm